

Conical mixer dryer, Reactor

patented

**Ideal mixing quality for quick and gentle drying,
moist and viscous materials at variable filling levels**

*For materials with
explosive dust, tip speed
less than 1 m/s!*

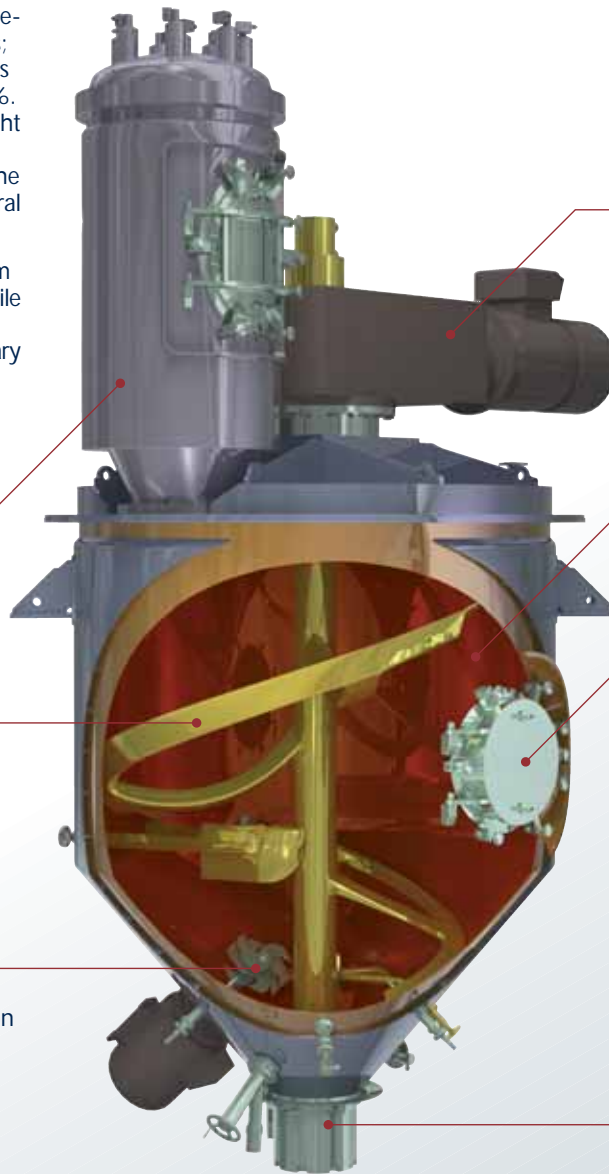
The spiral mixing blade initiates a three-dimensional flow of the mixing goods; conical designed mixing vessel enables powders to be discharged up to 100%. The reactor is vacuum and pressure tight and heatable by steam, thermal oil or water. Fully temperature controlled: the mixing vessel, the mixing arms, the spiral blade.

The mixer can be designed to conform with FDA standards to be used as a sterile mixer and reactor which also meets EHEDG requirements and the 3-a-sanitary standards.

Vapour filter equipped with inspection door on request

SinConcave[®] spiral blade (patented), driven and supported from above with the advantage of complete discharge

Choppers to improve the drying process by deagglomeration



Gear box equipped with a cooling device

Mixing chamber fully temperature controlled and insulated

Man hole can be located on the top or on the side

On request inspection door designed by Clever-Cut[®]

On request rotational washing nozzles, dismantable via sanitary flanges

Discharge armature without dead space



SinConvex[®] spiral blade (patented), meets the sine curve, creating ideal mixing qualities and best discharge ability

Sterile Reactor located between two floors

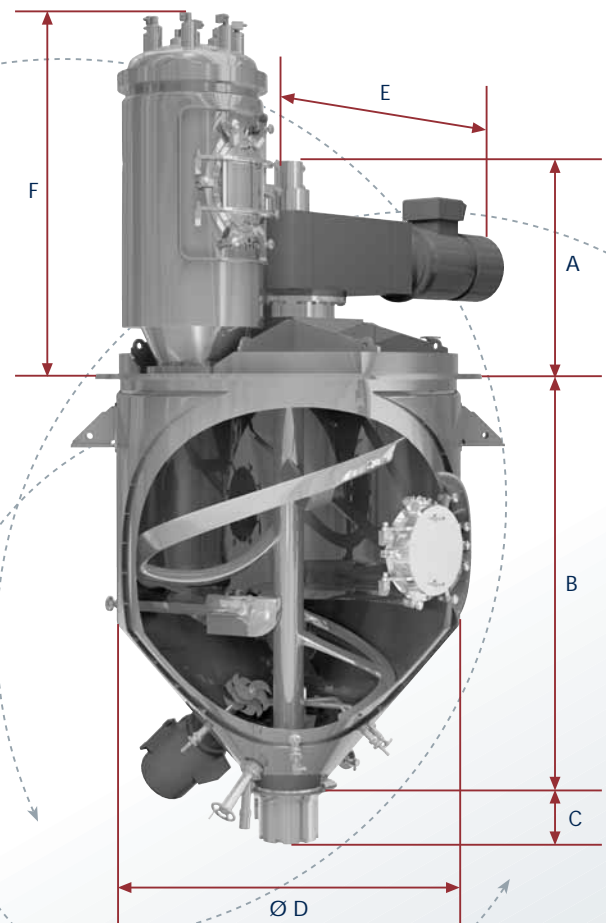


www.amixon.com

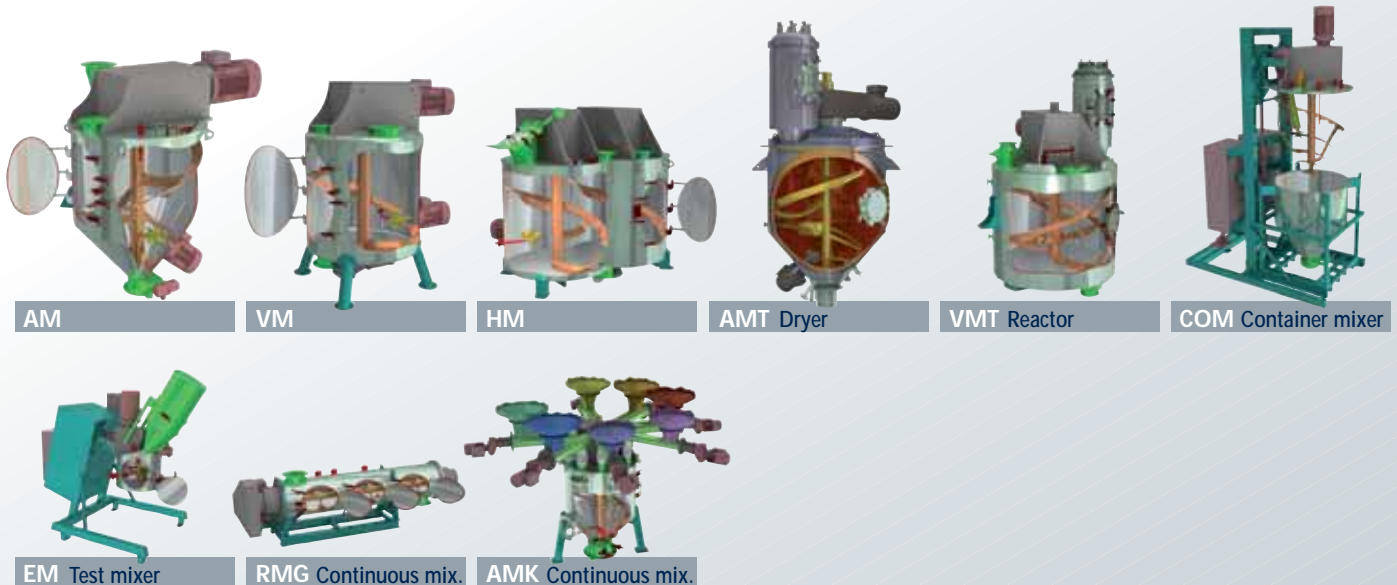
Conical mixer dryer, Reactor, Model AMT

| Model | ca. dimensions in mm, ca. weight in kg | | | | | | Weight |
|-------|--|------|-----|------|------|------|--------|
| | A | B | C | D | E | F | |
| 100 | 480 | 800 | 150 | 700 | 1200 | 800 | 1800 |
| 200 | 580 | 1000 | 150 | 850 | 1450 | 1000 | 2150 |
| 400 | 550 | 1250 | 250 | 1100 | 1650 | 1000 | 2900 |
| 600 | 580 | 1450 | 274 | 1100 | 1700 | 1200 | 3400 |
| 800 | 550 | 1650 | 274 | 1100 | 1700 | 1200 | 3800 |
| 1000 | 700 | 1700 | 274 | 1280 | 2000 | 1200 | 4150 |
| 1500 | 1000 | 1800 | 274 | 1590 | 2300 | 1400 | 5050 |
| 2000 | 1050 | 2150 | 274 | 1590 | 2350 | 1400 | 5750 |
| 2500 | 1050 | 2650 | 274 | 1640 | 2850 | 1600 | 6300 |
| 3000 | 1050 | 2500 | 274 | 1860 | 2750 | 1600 | 7200 |
| 4000 | 1100 | 2650 | 300 | 2020 | 2500 | 1800 | 9000 |
| 5000 | 1100 | 2600 | 300 | 2160 | 2700 | 1800 | 10800 |
| 6000 | 1100 | 2950 | 300 | 2300 | 2750 | 2000 | 12600 |
| 7000 | 1200 | 3150 | 330 | 2420 | 3000 | 2000 | 14400 |
| 8000 | 1250 | 3350 | 330 | 2540 | 3200 | 2300 | 17100 |
| 10000 | 1250 | 3400 | 330 | 2950 | 3650 | 2300 | 19800 |
| 12000 | 1350 | 3850 | 340 | 2950 | 3600 | 2500 | 23400 |
| 15000 | 1450 | 4200 | 340 | 2950 | 3600 | 2800 | 27000 |

Interim sizes are offered in 100 litre steps. Bigger mixers up to 50000 litres available on demand. Depending on the user needs the mixer weight may be lower or higher. Please ask for individual dimension sheets.



On request different designs are available, such as slim or low profiled mixing chambers.



amixon® test laboratories are available in Paderborn, Germany, in Memphis, USA and in Osaka, Japan. On request amixon can prepare detailed qualification documents.

We reserve the right to make changes due to progress in process engineering and manufacturing technology.
© by amixon GmbH, Paderborn. Reprinting or transfer to electronic media only permitted after written approval.

amixon® GmbH

Halberstädter Straße 55
D-33106 Paderborn (Germany)

Phone +49 (0) 52 51 / 68 88 88 - 0
Fax +49 (0) 52 51 / 68 88 88 - 999
e-mail info@amixon.de

www.amixon.com